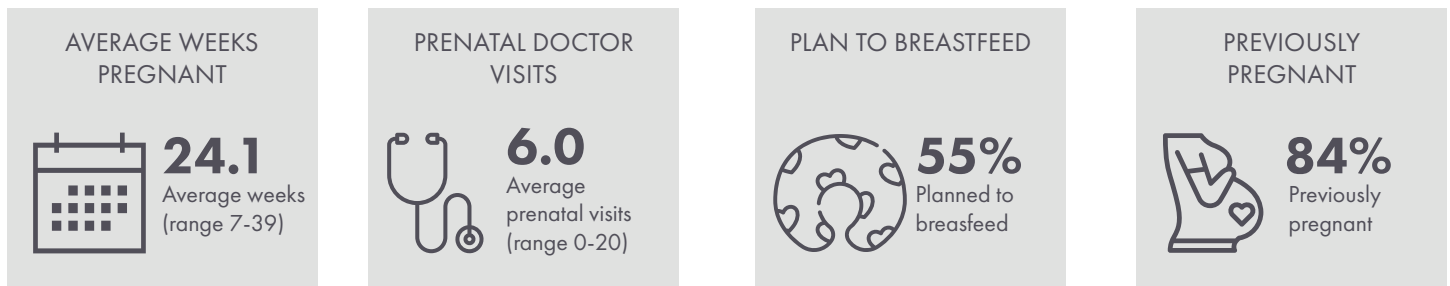
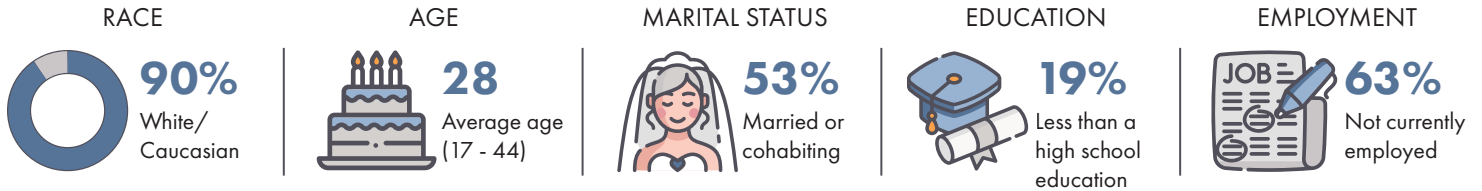


Who is Served by the KY-Moms MATR Program?

A Snapshot of Pregnant Clients at Baseline

The KY-Moms MATR case management program is administered by the Division of Behavioral Health in the Department for Behavioral Health, Developmental and Intellectual Disabilities; KY-Moms MATR (502) 564-4456/ (800) 374-9146

This fact sheet summarizes characteristics reported by 73 pregnant women in the KY-Moms MATR program who completed a pre-birth baseline assessment between June 2019 and November 2020.

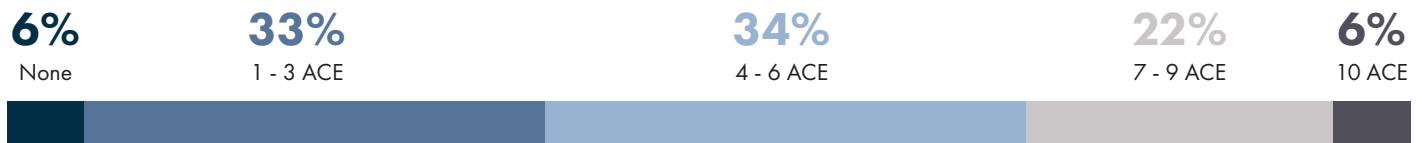


Risk Factors at Baseline

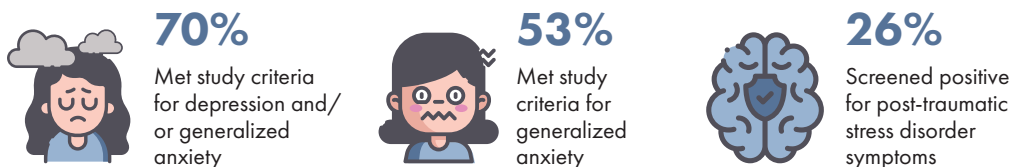
SUBSTANCE USE 6 MONTHS BEFORE PREGNANCY



ADVERSE CHILDHOOD EXPERIENCES (ACE)



MENTAL HEALTH 6 MONTHS BEFORE PREGNANCY



INTIMATE PARTNER ABUSE 6 MONTHS BEFORE PREGNANCY

